

Size range: ½" - 2"



This productline of ductile iron threaded fittings is the perfect complementary extension of our grooved fittings assortment for all threaded piping connections in the sizes ½" up to 2".

Available models from stock:

90, 90R, 120, 130, 130R, 180, 180R, 240, 241, 270, 280, 291.

Approvals

- FM approved to FM standard 1920.
- UL EX29487 listed.

Design

- Standard: dimensions and tolerances based on EN 10242 / ISO 49.
- Optional: ASME B16.3.
- Test pressure: 10 MPa / 100 bar / 1450 psi.

Threads

- Standard: ISO7 - BSPT thread.
- Optional: NPT thread.

Working pressure / temperature

- Water in fire sprinkler systems: 3,45 MPa / 34,5 bar / 500 psi (FM/UL).
- Other systems:

Size	Fluid	Working pressure up to 120°C	Working pressure up to 300°C
Up to 1"	Gas group 1	1,6 MPa / 16 bar / 232psi	1,3 MPa / 13 bar / 189 psi
Equal or greater than 1"	Gas group 1	X	X
Full range	Gas group 2	1,6 MPa / 16 bar / 232 psi	1,3 MPa / 13 bar / 189 psi
Full range	Fluid group 1	3,45 MPa / 34,5 bar / 500 psi	2 MPa / 20 bar / 290 psi
Full range	Fluid group 2	3,45 MPa / 34,5 bar / 500 psi	2,5 MPa / 25 bar / 363 psi

 (Group 1 & 2: according to directive 2014/68/EU)

- Design test pressure: 10 MPa / 100 bar / 1450 psi.
- Production tightness test (100%): 0,1 MPa / 1bar / 14,5 psi.

Material

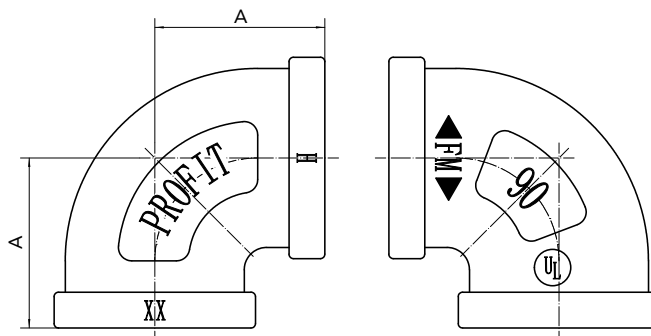
Standard from stock:

- Ductile iron conform to ASTM A536 gr 65-45-12 (EN-GJS-450-10), sandblasted and hot dip galvanised (EN ISO 1461).

Optional surface treatments (only available in container directly from factory):

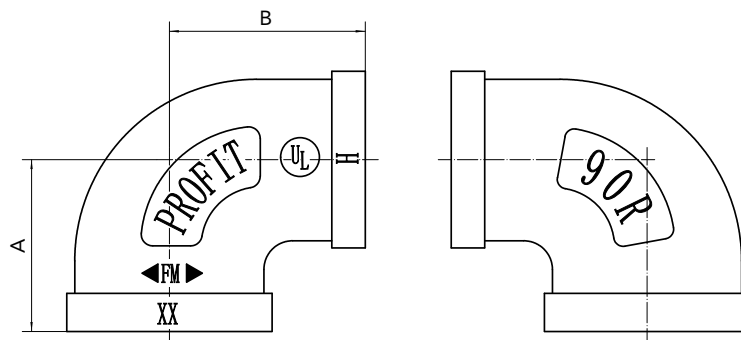
- Black (without treatment).
- Powdercoated in the available colours: red, white, blue, green, silver, grey, orange, yellow, golden.

Elbow 90°, type 90 • On stock



Reference		Size	DN	Dimensions	Weight (g)	Marking
Galva	Black			A		
TF90G½	TF90B½	½ "	15	28	82	90
TF90G¾	TF90B¾	¾ "	20	33	132	90
TF90G1	TF90B1	1 "	25	38	225	90
TF90G1¼	TF90B1¼	1-¼ "	32	45	390	90
TF90G1½	TF90B1½	1-½ "	40	50	440	90
TF90G2	TF90B2	2 "	50	58	668	90

Reducing elbow 90°, type 90R • On stock

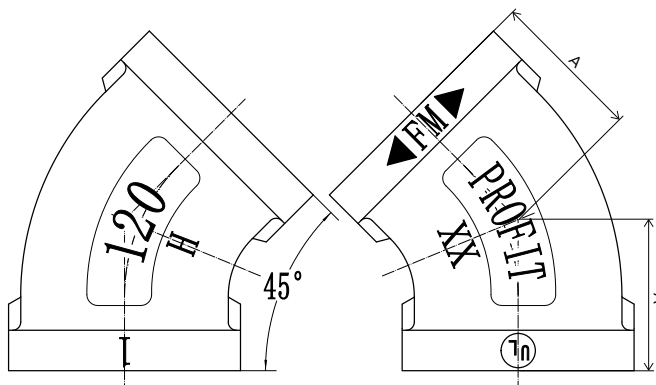


Reference		Size	DN	Dimensions		Weight (g)	Marking
Galva	Black			A	B		
TF90RG3/4-1/2	TF90RB3/4-1/2	3/4" x 1/2"	20x15			103	90R
TF90RG1-1/2	TF90RB1-1/2	1" x 1/2"	25x15	32	34	132	90R
TF90RG1-3/4	TF90RB1-3/4	1" x 3/4"	25x20	35	36	160	90R
TF90RG1 1/4-1/2 *	TF90RB1 1/4-1/2 *	1-1/4" x 1/2"	32x15	32	37	185	90R
TF90RG1 1/4-3/4	TF90RB1 1/4-3/4	1-1/4" x 3/4"	32x20	36	41	224	90R
TF90RG1 1/4-1	TF90RB1 1/4-1	1-1/4" x 1"	32x25	40	42	240	90R
TF90RG1 1/2-1/2 **	TF90RB1 1/2-1/2 **	1-1/2" x 1/2"	40x15	34	41	246	90R
TF90RG1 1/2-3/4 *	TF90RB1 1/2-3/4 *	1-1/2" x 3/4"	32x20	37	42	278	90R
TF90RG1 1/2-1	TF90RB1 1/2-1	1-1/2" x 1"	40x25	42	46	307	90R
TF90RG1 1/2-1 1/4	TF90RB1 1/2-1 1/4	1-1/2" x 1-1/4"	40x32	46	48	369	90R
TF90RG2-1/2 **	TF90RB2-1/2 **	2" x 1/2"	50x15	35	47	349	90R
TF90RG2-3/4 *	TF90RB2-3/4 *	2" x 3/4"	50x20	40	48	432	90R
TF90RG2-1 *	TF90RB2-1 *	2" x 1"	50x25	43	50	418	90R
TF90RG2-1 1/4 *	TF90RB2-1 1/4 *	2" x 1-1/4"	50x32	47	53	528	90R
TF90RG2-1 1/2	TF90RB2-1 1/2	2" x 1-1/2"	50x40	52	56	546	90R

* FM and UL approval only according to ASME B16.3.

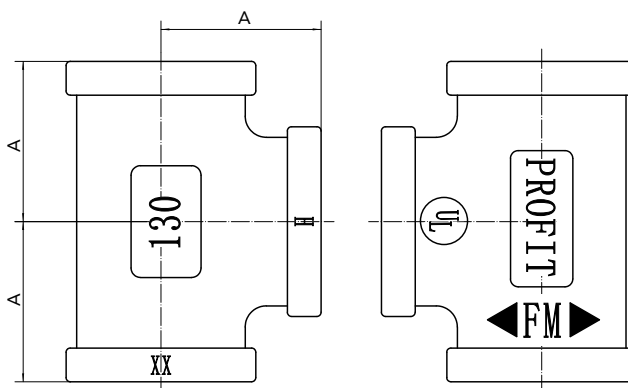
** No UL approval / no FM approval according to ASME B16.3.

Elbow 45°, type 120 • On stock



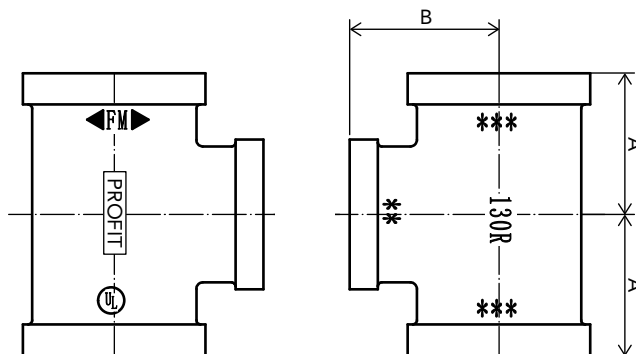
Reference		Size	DN	Dimensions	Weight (g)	Marking
Galva	Black			A		
TF120G½	TF120B½	½"	15	22	70	120
TF120G¾	TF120B¾	¾"	20	25	112	120
TF120G1	TF120B1	1"	25	28	176	120
TF120G1¼	TF120B1¼	1-¼"	32	33	274	120
TF120G1½	TF120B1½	1-½"	40	50	362	120
TF120G2	TF120B2	2"	50	58	598	120

Equal tee, type 130 • On stock



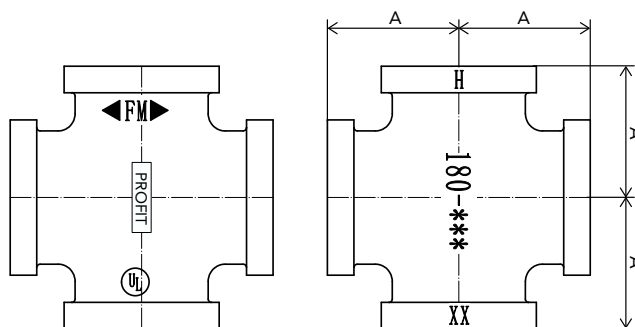
Reference		Size	DN	Dimensions	Weight (g)	Marking
Galva	Black			A		
TF130G½	TF130B½	½"	15	28	114	130
TF130G¾	TF130B¾	¾"	20	33	185	130
TF130G1	TF130B1	1"	25	38	377	130
TF130G1¼	TF130B1¼	1-¼"	32	45	488	130
TF130G1½	TF130B1½	1-½"	40	50	588	130
TF130G2	TF130B2	2"	50	58	892	130

Reducing tee, type 130R • Container only



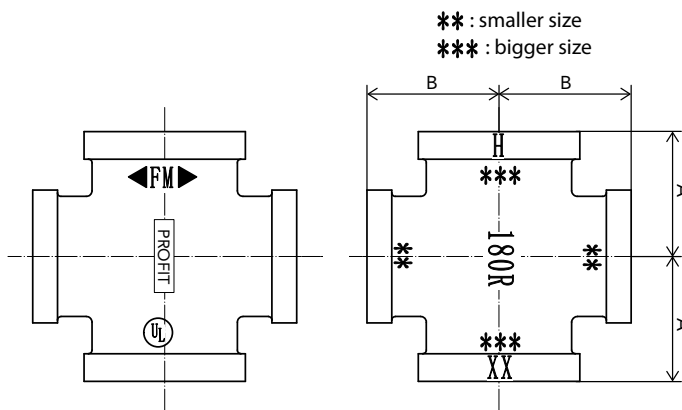
Reference		Size	DN	Dimensions		Weight (g)	Marking
Galva	Black			A	B		
TF130RG¾-½	TF130RB¾-½	¾" x ½"	20x15	30	31	153	130R
TF130RG1-½	TF130RB1-½	1" x ½"	25x15	32	34	205	130R
TF130RG1-¾	TF130RB1-¾	1" x ¾"	25x20	35	36	248	130R
TF130RG1¼-½	TF130RB1¼-½	1-¼" x ½"	32x15	34	38	304	130R
TF130RG1¼-¾	TF130RB1¼-¾	1-¼" x ¾"	32x20	36	41	316	130R
TF130RG1¼-1	TF130RB1¼-1	1-¼" x 1"	32x25	40	42	384	130R
TF130RG1½-½	TF130RB1½-½	1-½" x ½"	40x15	36	42	395	130R
TF130RG1½-¾	TF130RB1½-¾	1-½" x ¾"	40x20	38	44	418	130R
TF130RG1½-1	TF130RB1½-1	1-½" x 1"	40x25	42	46	456	130R
TF130RG1½-1¼	TF130RB1½-1¼	1-½" x 1-¼"	40x32	46	48	520	130R
TF130RG2-½	TF130RB2-½	2" x ½"	50x15	38	48	548	130R
TF130RG2-¾	TF130RB2-¾	2" x ¾"	50x20	40	50	596	130R
TF130RG2-1	TF130RB2-1	2" x 1"	50x25	44	52	650	130R
TF130RG2-1¼	TF130RB2-1¼	2" x 1-¼"	50x32	48	54	696	130R
TF130RG2-1½	TF130RB2-1½	2" x 1-½"	50x40	52	55	732	130R

Equal cross, type 180 • Container only



Reference		Size	DN	Dimensions	Weight (g)	Marking
Galva	Black			A		
TF180G½	TF180B½	½"	15	28	133	180
TF180G¾	TF180B¾	¾"	20	33	209	180
TF180G1	TF180B1	1"	25	38	376	180
TF180G1¼	TF180B1¼	1-¼"	32	45	612	180
TF180G1½	TF180B1½	1-½"	40	50	666	180
TF180G2	TF180B2	2"	50	58	1112	180

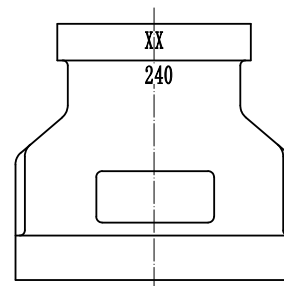
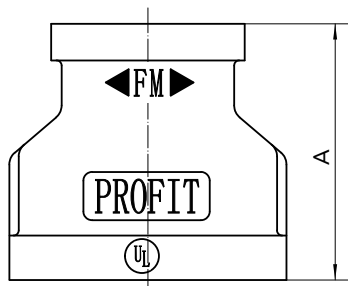
Reducing cross, type 180R • Container only



Reference		Size	DN	Dimensions		Weight (g)	Marking
Galva	Black			A	B		
TF180RG3/4-1/2	TF180RB3/4-1/2	3/4" x 1/2"	20x15	30	31	226	180R
TF180RG1-1/2	TF180RB1-1/2	1" x 1/2"	25x15	32	34	251	180R
TF180RG1-3/4	TF180RB1-3/4	1" x 3/4"	25x20	35	36	291	180R
TF180RG1 1/4-1/2 *	TF180RB1 1/4-1/2 *	1-1/4" x 1/2"	32x15	34	38	313	180R
TF180RG1 1/4-3/4	TF180RB1 1/4-3/4	1-1/4" x 3/4"	32x20	36	41	364	180R
TF180RG1 1/4-1	TF180RB1 1/4-1	1-1/4" x 1"	32x25	40	42	473	180R
TF180RG1 1/2-1/2 *	TF180RB1 1/2-1/2 *	1-1/2" x 1/2"	40x15	36	42	437	180R
TF180RG1 1/2-3/4 *	TF180RB1 1/2-3/4 *	1-1/2" x 3/4"	40x20	38	44	436	180R
TF180RG1 1/2-1	TF180RB1 1/2-1	1-1/2" x 1"	40x25	42	46	440	180R
TF180RG1 1/2-1 1/4 *	TF180RB1 1/2-1 1/4 *	1-1/2" x 1-1/4"	40x32	46	48	646	180R
TF180RG2-1/2 *	TF180RB2-1/2 *	2" x 1/2"	50x15	38	48	627	180R
TF180RG2-3/4 *	TF180RB2-3/4 *	2" x 3/4"	50x20	40	50	627	180R
TF180RG2-1 *	TF180RB2-1 *	2" x 1"	50x25	44	52	710	180R
TF180RG2-1 1/4 *	TF180RB2-1 1/4 *	2" x 1-1/4"	50x32	48	54	780	180R
TF180RG2-1 1/2 *	TF180RB2-1 1/2 *	2" x 1-1/2"	50x40	52	55	928	180R

* FM and UL approval only according to ASME 16.3.

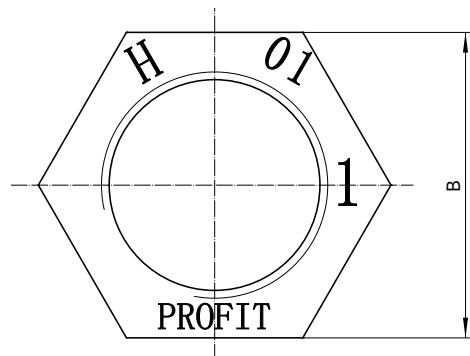
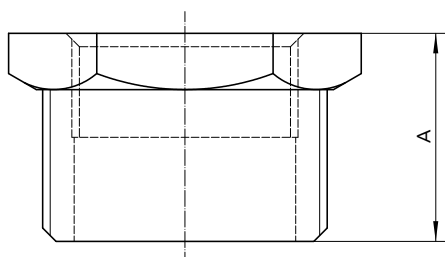
Reducing socket, type 240 • On stock



Reference		Size	DN	Dimensions	Weight (g)	Marking
Galva	Black			A		
TF240G $\frac{3}{4}$ - $\frac{1}{2}$	TF240B $\frac{3}{4}$ - $\frac{1}{2}$	$\frac{3}{4}$ " x $\frac{1}{2}$ "	20x15	39	90	240
TF240G1- $\frac{1}{2}$	TF240B1- $\frac{1}{2}$	1" x $\frac{1}{2}$ "	25x15	45	128	240
TF240G1- $\frac{3}{4}$	TF240B1- $\frac{3}{4}$	1" x $\frac{3}{4}$ "	25x20	45	140	240
TF240G1 $\frac{1}{4}$ - $\frac{1}{2}$	TF240B1 $\frac{1}{4}$ - $\frac{1}{2}$	1- $\frac{1}{4}$ " x $\frac{1}{2}$ "	32x15	50	174	240
TF240G1 $\frac{1}{4}$ - $\frac{3}{4}$	TF240B1 $\frac{1}{4}$ - $\frac{3}{4}$	1- $\frac{1}{4}$ " x $\frac{3}{4}$ "	32x20	50	210	240
TF240G1 $\frac{1}{4}$ -1	TF240B1 $\frac{1}{4}$ -1	1- $\frac{1}{4}$ " x 1"	32x25	50	202	240
TF240G1 $\frac{1}{2}$ - $\frac{1}{2}$	TF240B1 $\frac{1}{2}$ - $\frac{1}{2}$	1- $\frac{1}{2}$ " x $\frac{1}{2}$ "	40x15	55	223	240
TF240G1 $\frac{1}{2}$ - $\frac{3}{4}$	TF240B1 $\frac{1}{2}$ - $\frac{3}{4}$	1- $\frac{1}{2}$ " x $\frac{3}{4}$ "	32x20	55	229	240
TF240G1 $\frac{1}{2}$ -1	TF240B1 $\frac{1}{2}$ -1	1- $\frac{1}{2}$ " x 1"	40x25	55	225	240
TF240G1 $\frac{1}{2}$ -1 $\frac{1}{4}$	TF240B1 $\frac{1}{2}$ -1 $\frac{1}{4}$	1- $\frac{1}{2}$ " x 1- $\frac{1}{4}$ "	40x32	56	255	240
TF240G2- $\frac{1}{2}$	TF240B2- $\frac{1}{2}$	2" x $\frac{1}{2}$ "	50x15	65	374	240
TF240G2- $\frac{3}{4}$	TF240B2- $\frac{3}{4}$	2" x $\frac{3}{4}$ "	50x20	65	361	240
TF240G2-1	TF240B2-1	2" x 1"	50x25	65	390	240
TF240G2-1 $\frac{1}{4}$	TF240B2-1 $\frac{1}{4}$	2" x 1- $\frac{1}{4}$ "	50x32	65	423	240

A

Reducing bush, type 241 • On stock



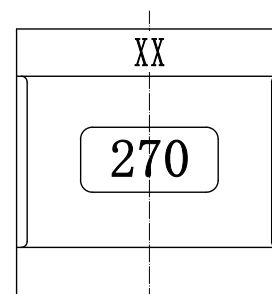
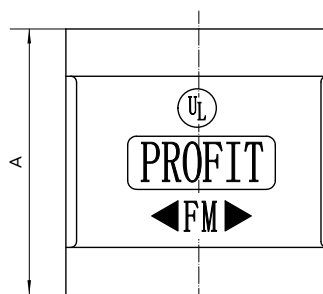
△

Reference		Size	DN	Dimensions		Weight (g)	Marking
Galva	Black			A	B		
TF241G $\frac{3}{4}$ - $\frac{1}{2}$	TF241B $\frac{3}{4}$ - $\frac{1}{2}$	$\frac{3}{4}$ " x $\frac{1}{2}$ "	20x15	26	30	50	241
TF241G1- $\frac{1}{2}$	TF241B1- $\frac{1}{2}$	1" x $\frac{1}{2}$ "	25x15	29	35,5	105	241
TF241G1 $\frac{1}{4}$ - $\frac{1}{2}$ *	TF241B1 $\frac{1}{4}$ - $\frac{1}{2}$ *	1- $\frac{1}{4}$ " x $\frac{1}{2}$ "	32x15	31	45,5	184	241
TF241G1 $\frac{1}{4}$ - $\frac{3}{4}$	TF241B1 $\frac{1}{4}$ - $\frac{3}{4}$	1- $\frac{1}{4}$ " x $\frac{3}{4}$ "	32x20	31	45,5	162	241
TF241G1 $\frac{1}{4}$ -1	TF241B1 $\frac{1}{4}$ -1	1- $\frac{1}{4}$ " x 1"	32x25	31	45,5	128	241
TF241G1 $\frac{1}{2}$ - $\frac{1}{2}$ *	TF241B1 $\frac{1}{2}$ - $\frac{1}{2}$ *	1- $\frac{1}{2}$ " x $\frac{1}{2}$ "	40x15	31	51,5	236	241
TF241G1 $\frac{1}{2}$ - $\frac{3}{4}$ *	TF241B1 $\frac{1}{2}$ - $\frac{3}{4}$ *	1- $\frac{1}{2}$ " x $\frac{3}{4}$ "	40x20	31	51,5	219	241
TF241G1 $\frac{1}{2}$ -1	TF241B1 $\frac{1}{2}$ -1	1- $\frac{1}{2}$ " x 1"	40x25	31	51,5	210	241
TF241G1 $\frac{1}{2}$ -1 $\frac{1}{4}$	TF241B1 $\frac{1}{2}$ -1 $\frac{1}{4}$	1- $\frac{1}{2}$ " x 1- $\frac{1}{4}$ "	40x32	31	51,5	145	241
TF241G2- $\frac{1}{2}$ *	TF241B2- $\frac{1}{2}$ *	2" x $\frac{1}{2}$ "	50x15	35	64	407	241
TF241G2- $\frac{3}{4}$ *	TF241B2- $\frac{3}{4}$ *	2" x $\frac{3}{4}$ "	50x20	35	64	314	241
TF241G2-1 *	TF241B2-1 *	2" x 1"	50x25	35	64	372	241
TF241G2-1 $\frac{1}{4}$	TF241B2-1 $\frac{1}{4}$	2" x 1- $\frac{1}{4}$ "	50x32	35	64	325	241

△

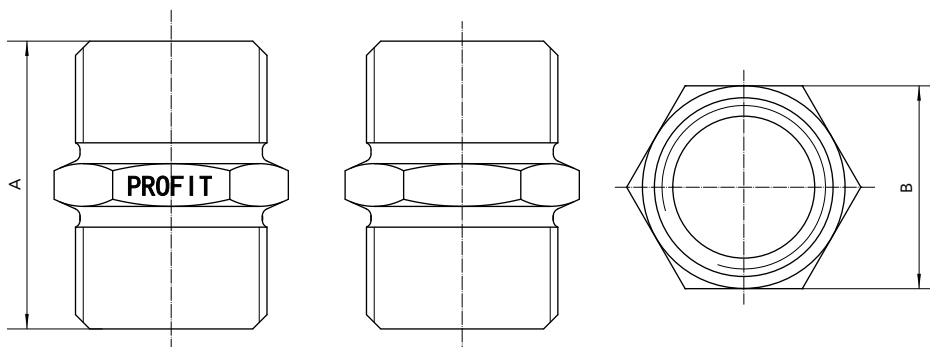
* No FM and UL approval according to ASME B16.3.

Socket, type 270 • On stock



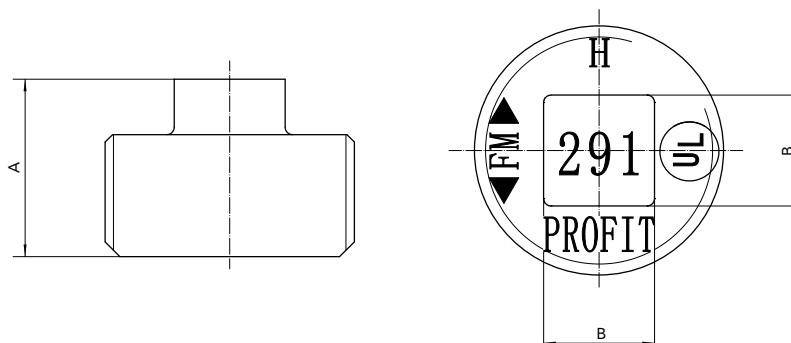
Reference		Size	DN	Dimensions		Weight (g)	Marking
Galva	Black			A	B		
TF270G $\frac{1}{2}$	TF270B $\frac{1}{2}$	$\frac{1}{2}$ "	15	36	48	270	270
TF270G $\frac{3}{4}$	TF270B $\frac{3}{4}$	$\frac{3}{4}$ "	20	39	98	270	270
TF270G1	TF270B1	1"	25	45	184	270	270
TF270G1 $\frac{1}{4}$	TF270B1 $\frac{1}{4}$	1- $\frac{1}{4}$ "	32	50	220	270	270
TF270G1 $\frac{1}{2}$	TF270B1 $\frac{1}{2}$	1- $\frac{1}{2}$ "	40	55	276	270	270
TF270G2	TF270B2	2"	50	65	452	270	270

Hexagon nipple, type 280 • On stock



Reference		Size	DN	Dimensions		Weight (g)	Marking
Galva	Black			A	B		
TF280G½	TF280B½	½"	15	44	23	54	280
TF280G¾	TF280B¾	¾"	20	47	30	82	280
TF280G1	TF280B1	1"	25	53	36	125	280
TF280G1¼	TF280B1¼	1-¼"	32	57	46	202	280
TF280G1½	TF280B1½	1-½"	40	59	51	228	280
TF280G2	TF280B2	2"	50	68	68	408	280

Plain plug, type 291 • On stock



Reference		Size	DN	Dimensions		Weight (g)	Marking
Galva	Black			A	B		
TF291G½	TF291B½	½"	15	25	11	28	291
TF291G¾	TF291B¾	¾"	20	28,5	14	43	291
TF291G1	TF291B1	1"	25	32,5	15	57	291
TF291G1¼	TF291B1¼	1-¼"	32	35,1	18	112	291
TF291G1½	TF291B1½	1-½"	40	37,6	18	149	291
TF291G2	TF291B2	2"	50	40,1	26	235	291

GENERAL INFO

- Installers should be trained or experienced to install and understand the product.
- Read and understand all technical datasheets and installation instructions before attempting to install, remove or adjust any Profit piping products.
- Depressurise and drain the sprinkler installation system before attempting to install, remove or adjust any Profit piping products.
- Never work on piping systems that are pressurised and / or filled with water.
- Piping Logistics reserves the right to change specifications, designs and / or standard equipment without notice and without incurring in any obligations.
- Use the necessary Personal Protection Equipment (PPE) to avoid personal injury (helmet, safety shoes and goggles, Profit gloves).



Failure to follow these instructions could result in death or serious injury and property damage.

We advise to always store our products in closed and dry environments, the products do not need any specific maintenance once installed on an aboveground sprinkler installation.

REVISION TABLE

Date	△	Notes
28/02/2025		Initial release.
20/03/2025		Page 1 - Addition working pressure.
03/04/2025	B	Page 1 - New product picture.
09/05/2025	C	Page 7 - Deleted size 1" x ¾".
09/05/2025	D	Page 8 - Technical drawing expanded.
16/05/2025	E	Page 1 - Directive number modified.
15/07/2025	A	Page 5, 6 & 7 - Correction of the reference.